

Fylde Mountaineering Club



Nowt's On – No. 1

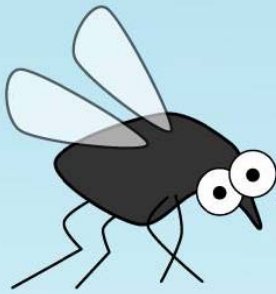
This week's Editor : Steve Clark

Welcome to the inaugural issue of Nowt's On. A brief guide to exactly what isn't happening in the FMC this week.

Nominations or volunteers to write Nowt's On No. 2 – email me at steve@hexan.co.uk

Midges coming out for spring

Being
Scottish



We're starving.
Where the f***
is everybody?

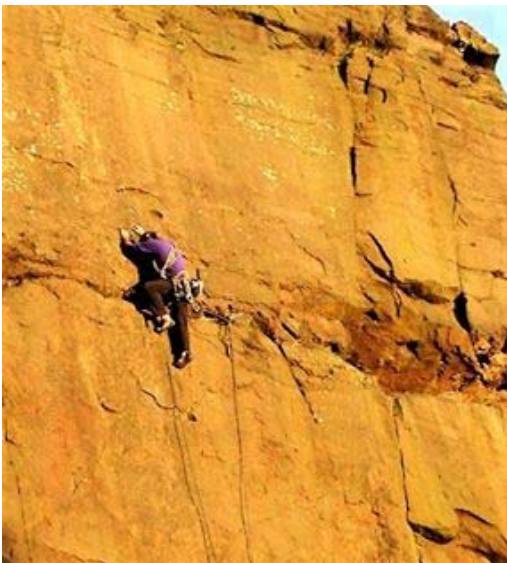


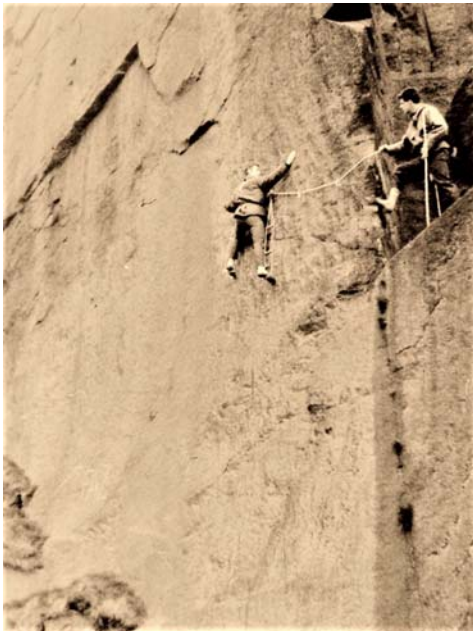
(from Caroline)

Martin Dale (from facebook)

Thurs 23rd April : FMC Evening Climbing - Tonight! Denham Quarry.

Yes, the first outdoor evening climbing meet of the season should be tonight! Sadly, we can't go due to current circumstances. However, thought we could post our photo's on here of previous nights climbing there! I ain't got any myself but feel free folks!





Martin Bennett Denham 1965, only, pre Lancashire guide book we called it Brindle Quarry - the wall left of Splash Arete had a line of bolts - well, more like curtain hooks really, going up it. Having read about summit called artificial climbing we thought we'd give it a go. Surprised ourselves by getting up it.



Simon Fenna (from facebook)

Not wanting to be kill-joy but I've noticed that in the last month attendance at meets and socials has dropped to effectively "nothing".

No reports of what anyone is up to on the crag or out on the mountains.

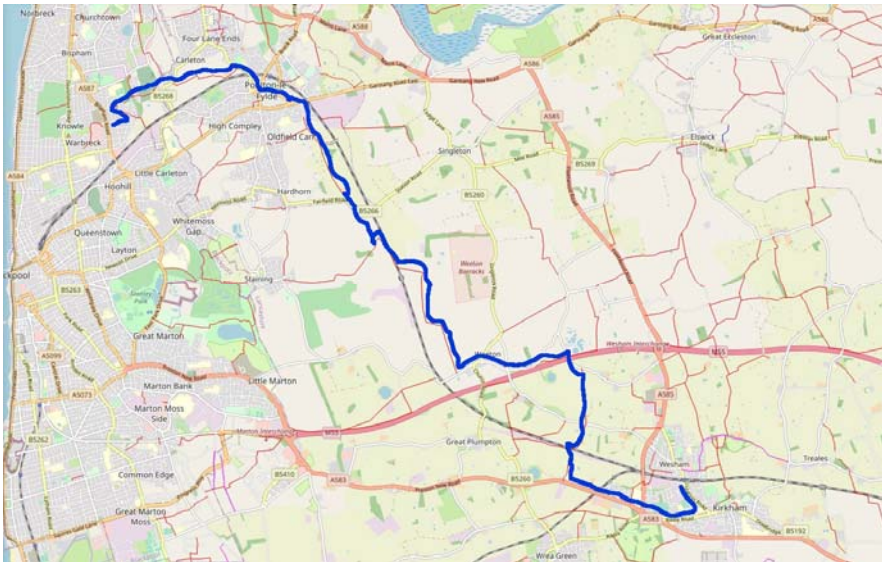
Have I missed something or are we no longer a mountaineering club?

Come on folks get yer fingers out!

Matt Reed - My spuds are thriving!

Andy Chambers - I did a few ascents of the appropriately named 'Stairs to the Loft' today, feeling brave so solo'd it! Pretty unimpressive climb to be honest but nice views from the top. 1*

Henry Iddon - I dropped car at Saab garage in Kirkham yesterday then walked back to Bispham via Weeton and various footpaths - was ace !



Iggi Moore - I'm training



Martin Bennett - I recently did th FA of Guide Cuttings Buttress, solo. Ranger did the 2nd ascent but passed me on the way up so



Martin Bennett Today followed that with an ascent and descent of Belthorn Gully. Ranger declined to follow (a bit loose and maybe spooked by sighting of a roe deer dashing from said defile - quite exciting being as it is 200 yards from our house.



Peter Stridgeon - Needed to be said Simon. I have spent just as much time on routes and in the mountains this year as I did last year. Some should be getting their nob status revoked.

Caroline Webb - I bumble up the Grade V Arnside Knott most days

Karen Hicks - My Vegetable plot and baskets are doing extremely well. Plus circuit on bicycle 10 miles 5 times a week!!!!

Tony Hulme - Made the first free ascent of Micassa North face yesterday. Took the buttress between porch pike and lounge window to start. Then the crux through the gutter and fascia overhang to the 40 degree upper slope, with an exposed ridge walk. I'd have traversed below chimney buttress but got called in for my tea.



Martin Dale I'm in training too!



Martin Dale In the ghetto!!



Caroline Webb So if I go for a solo ascent of the South Face of the Pepperpot am I best using the Harding Traverse or going via the Swift Step??

Martin Dale Caroline Webb I've summited the pepperpot! Thought it were about V3!

Caroline Webb So having reviewed the route description for the Pepperpot South Face via the Harding Traverse ("a highly polished pile of red rock only for the foolhardy") I opted for the North Face via the Swift Step, a much more pleasant route up gentle slabs

Ali Welsh Discovering local bridleways is fun but would be enhanced with a visit to The Snug micropub after



Sean Smith Same here!



Martin Dale - Is this allowed, if I go down there on my bike from home? Bispham prom wall, early 80's

